

## Test Report

No. TSNEC0901023601

Date: 31 Dec 2009

Page 1 of 4

YANTAI E.S.T SILICONE TECH CO.,LTD.  
89 HUAN HAI ROAD,YANTAI CITY,SHANDONG  
CHINA

The following sample(s) was/were submitted and identified on behalf of the clients as :  
SILICONE

SGS Job No. : 1011173 - TJ  
SGS Internal Reference No. : 2.2  
Composition : VINYL-FUNCTIONAL POLYDIMETHY SILOXANE  
Model No. : DSE32890A  
Date of Sample Received : 28 Dec 2009  
Testing Period : 28 Dec 2009 - 31 Dec 2009  
  
Test Requested : Selected test(s) as requested by client.  
Test Method : Please refer to next page(s).  
Test Results : Please refer to next page(s).  
Conclusion : Based on the performed tests on submitted sample(s), the results comply with the RoHS Directive 2002/95/EC and its subsequent amendments.

Signed for and on behalf of  
SGS-CSTC Ltd.



Lucid Qi  
Lab Manager

This document is issued by the Company subject to its General Conditions of Service printed overleaf, available on request or accessible at [http://www.sgs.com/terms\\_and\\_conditions.htm](http://www.sgs.com/terms_and_conditions.htm) and, for electronic format documents, subject to Terms and Conditions for Electronic Documents at [www.sgs.com/terms\\_e-document.htm](http://www.sgs.com/terms_e-document.htm). Attention is drawn to the limitation of liability, indemnification and jurisdiction issues defined therein. Any holder of this document is advised that information contained hereon reflects the Company's findings at the time of its intervention only and within the limits of Client's instructions, if any. The Company's sole responsibility is to its Client and this document does not exonerate parties to a transaction from exercising all their rights and obligations under the transaction documents. This document cannot be reproduced except in full, without prior written approval of the Company. Any unauthorized alteration, forgery or falsification of the content or appearance of this document is unlawful and offenders may be prosecuted to the fullest extent of the law. Unless otherwise stated the results shown in this test report refer only to the sample(s) tested.



Test Results:

ID for specimen 1 : TSN09-010236.001  
 Description for specimen 1 : black paste

RoHS Directive 2002/95/EC

Test Item(s)	Unit	Test Method (Reference)	Result	MDL	Limit
Cadmium (Cd)	mg/kg	IEC 62321 Ed.1: 2008, ICP-AES	N.D.	2	100
Lead (Pb)	mg/kg	IEC 62321 Ed.1: 2008, ICP-AES	N.D.	2	1000
Mercury (Hg)	mg/kg	IEC 62321 Ed.1: 2008, ICP-AES	N.D.	2	1000
Hexavalent Chromium (CrVI) by alkaline extraction	mg/kg	IEC 62321 Ed.1: 2008, UV-Vis	N.D.	2	1000
Sum of PBBs	mg/kg	-	N.D.	-	1000
Monobromobiphenyl	mg/kg	IEC 62321 Ed.1: 2008, GC-MS	N.D.	5	
Dibromobiphenyl	mg/kg	IEC 62321 Ed.1: 2008, GC-MS	N.D.	5	
Tribromobiphenyl	mg/kg	IEC 62321 Ed.1: 2008, GC-MS	N.D.	5	
Tetrabromobiphenyl	mg/kg	IEC 62321 Ed.1: 2008, GC-MS	N.D.	5	
Pentabromobiphenyl	mg/kg	IEC 62321 Ed.1: 2008, GC-MS	N.D.	5	
Hexabromobiphenyl	mg/kg	IEC 62321 Ed.1: 2008, GC-MS	N.D.	5	
Heptabromobiphenyl	mg/kg	IEC 62321 Ed.1: 2008, GC-MS	N.D.	5	
Octabromobiphenyl	mg/kg	IEC 62321 Ed.1: 2008, GC-MS	N.D.	5	
Nonabromobiphenyl	mg/kg	IEC 62321 Ed.1: 2008, GC-MS	N.D.	5	
Decabromobiphenyl	mg/kg	IEC 62321 Ed.1: 2008, GC-MS	N.D.	5	
Sum of PBDEs	mg/kg	-	N.D.	-	1000
Monobromodiphenyl ether	mg/kg	IEC 62321 Ed.1: 2008, GC-MS	N.D.	5	
Dibromodiphenyl ether	mg/kg	IEC 62321 Ed.1: 2008, GC-MS	N.D.	5	
Tribromodiphenyl ether	mg/kg	IEC 62321 Ed.1: 2008, GC-MS	N.D.	5	
Tetrabromodiphenyl ether	mg/kg	IEC 62321 Ed.1: 2008, GC-MS	N.D.	5	
Pentabromodiphenyl ether	mg/kg	IEC 62321 Ed.1: 2008, GC-MS	N.D.	5	
Hexabromodiphenyl ether	mg/kg	IEC 62321 Ed.1: 2008, GC-MS	N.D.	5	
Heptabromodiphenyl ether	mg/kg	IEC 62321 Ed.1: 2008, GC-MS	N.D.	5	
Octabromodiphenyl ether	mg/kg	IEC 62321 Ed.1: 2008, GC-MS	N.D.	5	
Nonabromodiphenyl ether	mg/kg	IEC 62321 Ed.1: 2008, GC-MS	N.D.	5	
Decabromodiphenyl ether	mg/kg	IEC 62321 Ed.1: 2008, GC-MS	N.D.	5	

Note:

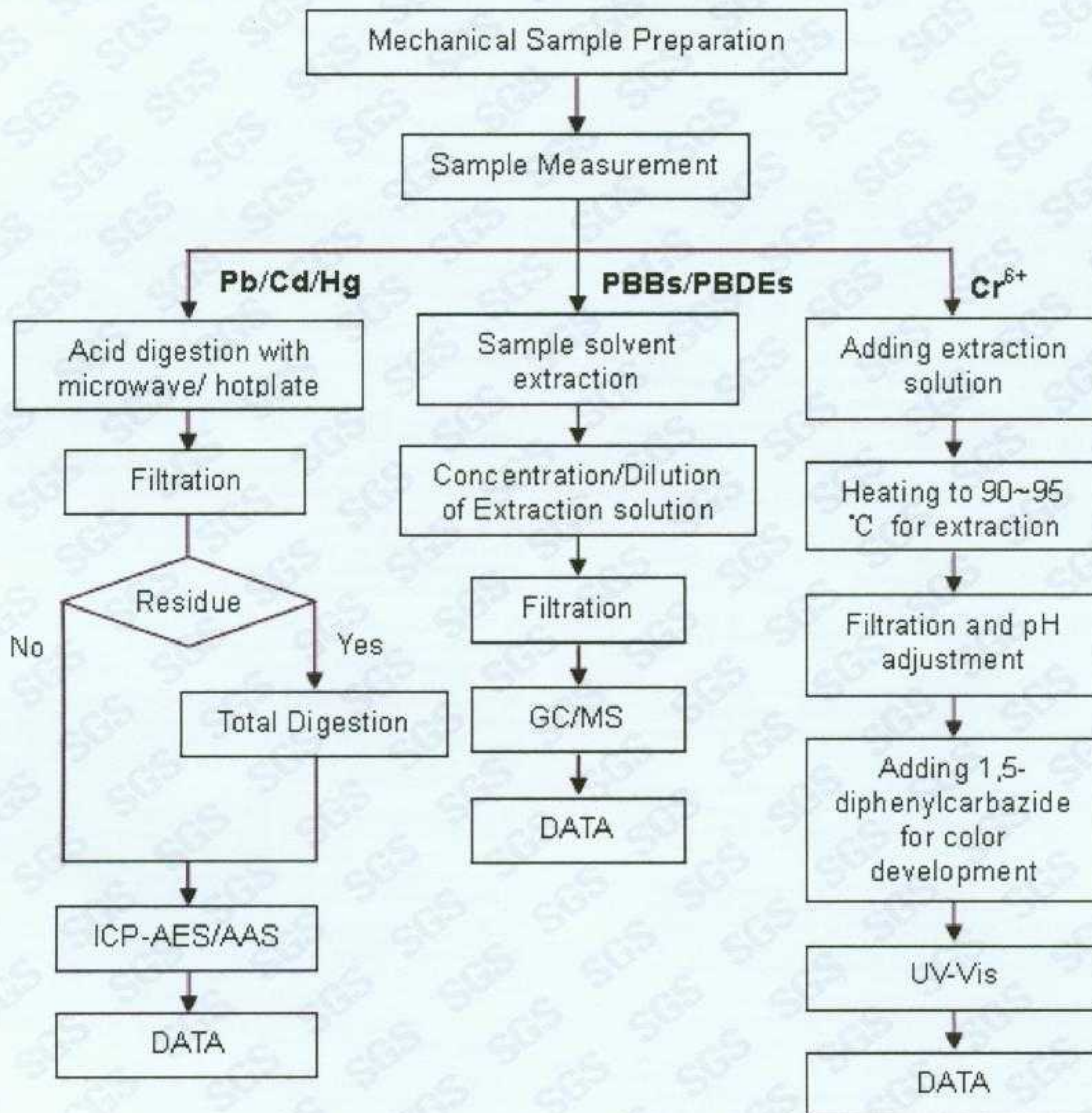
1. mg/kg = ppm
2. N.D. = Not Detected (< MDL)
3. MDL = Method Detection Limit
4. "-" = Not regulated
5. The maximum permissible limit is quoted from the document 2005/618/EC amending RoHS directive 2002/95/EC

This document is issued by the Company subject to its General Conditions of Service printed overleaf, available on request or accessible at [http://www.sgs.com/terms\\_and\\_conditions.htm](http://www.sgs.com/terms_and_conditions.htm) and, for electronic format documents, subject to Terms and Conditions for Electronic Documents at [www.sgs.com/terms\\_e-document.htm](http://www.sgs.com/terms_e-document.htm). Attention is drawn to the limitation of liability, indemnification and jurisdiction issues defined therein. Any holder of this document is advised that information contained hereon reflects the Company's findings at the time of its intervention only and within the limits of Client's instructions, if any. The Company's sole responsibility is to its Client and this document does not exonerate parties to a transaction from exercising all their rights and obligations under the transaction documents. This document cannot be reproduced except in full, without prior written approval of the Company. Any unauthorized alteration, forgery or falsification of the content or appearance of this document is unlawful and offenders may be prosecuted to the fullest extent of the law. Unless otherwise stated the results shown in this test report refer only to the sample(s) tested.

**TJCM 251453**

### Pb/Cd/Hg/Cr<sup>6+</sup>/PBBs&PBDEs Testing Flow Chart

- 1) Operator : Amy Wang
- 2) Section Chief : Cindy Yin



This document is issued by the Company subject to its General Conditions of Service printed overleaf, available on request or accessible at [http://www.sgs.com/terms\\_and\\_conditions.htm](http://www.sgs.com/terms_and_conditions.htm) and for electronic format documents, subject to Terms and Conditions for Electronic Documents at [www.sgs.com/terms\\_e-document.htm](http://www.sgs.com/terms_e-document.htm). Attention is drawn to the limitation of liability, indemnification and jurisdiction issues defined therein. Any holder of this document is advised that information contained hereon reflects the Company's findings at the time of its intervention only and within the limits of Client's instructions, if any. The Company's sole responsibility is to its Client and this document does not exonerate parties to a transaction from exercising all their rights and obligations under the transaction documents. This document cannot be reproduced except in full, without prior written approval of the Company. Any unauthorized alteration, forgery or falsification of the content or appearance of this document is unlawful and offenders may be prosecuted to the fullest extent of the law. Unless otherwise stated the results shown in this test report refer only to the sample(s) tested.

Sample photo:



SGS authenticate the photo on original report only

\*\*\* End of Report \*\*\*

This document is issued by the Company subject to its General Conditions of Service printed overleaf, available on request or accessible at [http://www.sgs.com/terms\\_and\\_conditions.htm](http://www.sgs.com/terms_and_conditions.htm) and for electronic format documents, subject to Terms and Conditions for Electronic Documents at [www.sgs.com/terms\\_e-document.htm](http://www.sgs.com/terms_e-document.htm). Attention is drawn to the limitation of liability, indemnification and jurisdiction issues defined therein. Any holder of this document is advised that information contained hereon reflects the Company's findings at the time of its intervention only and within the limits of Client's instructions, if any. The Company's sole responsibility is to its Client and this document does not exonerate parties to a transaction from exercising all their rights and obligations under the transaction documents. This document cannot be reproduced except in full, without prior written approval of the Company. Any unauthorized alteration, forgery or falsification of the content or appearance of this document is unlawful and offenders may be prosecuted to the fullest extent of the law. Unless otherwise stated the results shown in this test report refer only to the sample(s) tested.